



**REGISTER  
NOW**

**CONFERENCE VENUE**

**CONVENTION CENTRE, CAMPUS-2,  
SIKSHA 'O' ANUSANDHAN, DEEMED  
TO BE UNIVERSITY,  
BHUBANESWAR**

**CONFERENCE DATE:  
DECEMBER 8 - 10, 2025**

# INTERNATIONAL CONFERENCE

## BIOTECHNOLOGY FOR SUSTAINABLE DEVELOPMENT & CIRCULAR ECONOMY (BSDCE-2025)

**ORGANIZED BY:** CENTER FOR INDUSTRIAL BIOTECHNOLOGY  
RESEARCH (CIBR) SIKSHA 'O' ANUSANDHAN DEEMED TO BE  
UNIVERSITY (SOA), ODISHA, INDIA.

**IN COLLABORATION WITH:** BIOTECH RESEARCH  
SOCIETY, INDIA (BRSI)A

## BENEFITS OF ATTENDING

**CONFERENCE PARTICIPATION:**

PARTICIPATE IN EXCLUSIVE PAN-  
ELS, DISCUSSIONS, AND NET-  
WORKING EVENTS DURING THE  
CONFERENCE

**PROFESSIONAL RECOGNITION:**

ENHANCE YOUR REPUTATION IN  
THE ACADEMIC COMMUNITY BY  
CONTRIBUTING TO A PRESTIGIOUS  
INTERNATIONAL CONFERENCE

**NETWORKING OPPORTUNITIES:**

CONNECT WITH LEADING EXPERTS,  
RESEARCHERS, AND PROFESSION-  
ALS IN YOUR FIELD, FOSTERING  
COLLABORATION AND FUTURE  
PARTNERSHIPS

**MENTORSHIP OPPORTUNITIES:**

SHARE YOUR EXPERTISE BY MEN-  
TORING YOUNG RESEARCHERS  
AND HELPING SHAPE THE FUTURE  
OF YOUR DISCIPLINE

**CONFERENCE PUBLICATION:**

PUBLICATION OF ALL YOUR  
PAPERS IN RENOWNED JOURNALS  
INDEXED IN PRESTIGIOUS  
DATABASES SUCH AS SCOPUS ETC



# ABOUT THE CONFERENCE

■ In recent years, world is facing unprecedented challenges related to climate change, resource depletion, waste management, rising healthcare issues and food security where biotechnology has significant potential to address the global challenges in creating a sustainable future. Industrial biotechnology promotes energy-efficient and sustainable manufacturing processes making way for circular economy. The International Conference “Biotechnology for Sustainable Development & Circular Economy” (BSDCE-2025) will be jointly organized by Centre for Industrial Biotechnology Research (CIBR), Siksha ‘O’ Anusandhan Deemed to be University, Bhubaneswar and Biotech Research Society, India. The

conference is a global platform for researchers, policymakers, industry leaders, and academicians to share knowledge, present innovations, and collaborate on initiatives that foster a sustainable and circular approach to tackling the pressing challenges of the 21st century.

The scientific program of the conference would comprise plenary and invited lectures from the internationally acclaimed and eminent experts. Academic contributions will be represented as paper presentations and posters. About 40 speakers from 20 countries will share their perspectives over duration of three days at BSDCE-2025. A detailed list of speakers will be available on the conference website.

## OBJECTIVES OF THE CONFERENCE

**The conference aims to encourage quality research discussion and debate on recent development on Biotechnology for Sustainable Development and Circular Economy.**



To deliberate on effective ways to nurture both start-ups as and entrepreneurship in relation to Industrial Biotechnology/ Bio-business fostering Circular Economy.



To provide a forum to academicians, scholars, industrial professionals and policy makers to share their knowledge on research progress to commercialize the technology for the societal benefits.

### WHO CAN PARTICIPATE

Students, Research Scholars, Faculties, Scientists, Industrialists / Business executives from around the globe.

# ABOUT SOA

■ Siksha ‘O’ Anusandhan (Deemed to be University), Bhubaneswar, spread over 127 acres of area, is a leading University in India offering professional programs in the disciplines of Basic Sciences, Engineering, Biotechnology, Medicine Sciences, Pharmaceutical Sciences, Managements, Law, Agricultural & Agricultural Management Practice (AMP) & Veterinary Sciences. SOADU is accredited by the National Assessment and Accreditation Council (NAAC) with (A++) grade. As per National Institutional Ranking Framework (NIRF), ranking of SOADU in 2024 is 14 in university category, 9 in Law, 26 in Engineering, 21

in Medical and 9 in Dental category. SOA has been recognized as Scientific and Industrial Research Organization (SIRO) by Department of Scientific and Industrial Research (DSIR), Govt. of India and has also received UGC Section 12(B) status. SOA is one of the leading destinations for higher education within India and eventually overseas. The University has proven its track record of quality research activities of the highest level. It presently houses 20 world-class research centres on campus and 60 specialized R&D laboratories to promote advanced and applied research in various fields.





# ABOUT CIBR

■ The Centre for Industrial Biotechnology Research (CIBR) at Siksha 'O' Anusandhan University, established in 2023, focuses on advancing biotechnology research in industrial, marine, agricultural, environmental, pharmaceutical, and medical fields. With state-of-the-art labs in genomics, proteomics, bioinformatics, fermentation, and marine biotechnology, CIBR provides training for students, researchers, and industry personnel, and engages in collaborative research. The centre also offers contract research and consultancy services, aiming for excellence in research, training, and outreach programs. CIBR works to foster a strong biotechnology ecosystem in Odisha by linking academia, industry, and government, and promoting global innovation. It is promoting an incubation centre to turn biotechnological ideas into practical applications, while encouraging international collaboration for research, technology transfer, and medical AI projects. CIBR also focuses on translating research into societal benefits through awareness programs and offers technical support to industries. The centre's goal is to contribute significantly to biotechnology development and national socio-economic growth.

# ABOUT BRSI

■ The aim of the Biotech Research Society of India [BRSI] is to promote the R&D in biotechnology, bring interaction between the academic institutes and biotech industries, interact with the industries and help them in resolving their problems as well make them aware with the new developments in the biotech sector, provide and arrange training in biotechnology, dissemination of biotech knowledge through the organization of lectures, seminars and symposia on scientific programmes and societal missions.

## CALL FOR PAPERS

■ Research scholars and students are encouraged to participate and present their research at the conference. Research papers and posters to be presented in the conference will be invited for full length manuscript submission (the date for which starts from 15th Oct, 2025). Authors are invited to submit their original and unpublished manuscripts based on empirical research, experiences, reviews, promising ideas that demonstrate research focusing on main theme and sub themes of the International Conference. Full manuscripts will undergo regular peer review process for publication in any of the several reputed scientific journals. Best papers and posters will be awarded at the concluding ceremony of the conference. A souvenir of all the abstracts including plenary, invited lectures and contributory presentations would be published.



## AWARDS

Poster presented by Ph.D. Scholars will be eligible to contest for the Best Paper Award

**SCIENTIFIC WRITING**  
Scientific Writing Workshop will be organized by the leading and highly reputed Academicians and Scientists.

**SPECIAL PROGRAMS**  
Meet the Scientist Program sponsored by BRSI, for class IX to XII students

**EXHIBITION**  
Exhibition by Start-ups, Industry and Scientific Suppliers

## THEMES

- Industrial & Environmental Biotechnology (BEB)
- Food & Agriculture Biotechnology (FAB)
- Marine & Aquaculture Biotechnology (MAB)
- Medical & Pharmaceutical Biotechnology (MPB)
- Green-Hydrogen & Bio-fuel Biotechnology (GGB)
- Circular Economy & Bio-business (CEB)



Chief Patron

**Prof. Manojranjan Nayak**

Founder President, Siksha 'O' Anusandhan  
(Deemed to be University)



Patron

**Prof. Pradipta Kumar Nanda**

Vice-Chancellor  
Siksha 'O' Anusandhan  
(Deemed to be University)



Chief Advisor

**Prof. Damodar Acharya**

Chairman, International Advisory  
Board, Siksha 'O' Anusandhan  
(Deemed to be University)



Advisor

**Dr. Prasant  
K Patra**

Pro-VC  
Siksha 'O'  
Anusandhan  
(Deemed to be  
University)



Financial  
Advisor

**Prof. Manas  
Kumar Mallick**

Director, ITER  
Siksha 'O'  
Anusandhan  
(Deemed to be  
University)



Advisor

**Prof. Jayanta  
K Nath**

Dean R&D  
Siksha 'O'  
Anusandhan  
(Deemed to be  
University)



Advisor

**Prof.  
Jyotiranjana  
Das**

Dean, Student  
Welfare  
Siksha 'O'  
Anusandhan  
(Deemed to be  
University)



Advisor

**Prof. Susanta  
Ranjan Chaini**  
Dean, School of  
Hotel Management  
(SHM)

Siksha 'O'  
Anusandhan  
(Deemed  
to be University)



Advisor

**Prof.  
Dhirendranath  
Thatoi**

Addl Dean  
Academics, ITER  
Siksha 'O'  
Anusandhan  
(Deemed to be  
University)





**General Chair**  
**Prof. Ashok Pandey**  
Executive Director  
Centre for Energy and  
Environmental Sustainability,  
Lucknow, India



**Co-General Chair**  
**Dr. Pamesh C. Ray**  
Former Principal Scientist  
ICAR-CTCRI, Thiruvananthapuram  
and Adjunct Prof.  
Siksha 'O' Anusandhan  
(Deemed to be University)



**Co-General Chair**  
**Prof. Santosh Kumar Rout**  
Dean, Institute of Agricultural  
Science,  
Siksha 'O' Anusandhan  
(Deemed to be University)



**Conference Chair**  
**Prof. Sudhir K Sopory**  
Senior Emeritus Professor  
International Centre for Genetic  
Engineering & Biotechnology,  
New Delhi



**Conference Chair**  
**Prof. Hrudayanath Thatoi**  
Director,  
Centre for Industrial  
Biotechnology Research,  
Siksha 'O' Anusandhan  
(Deemed to be University)



**Conference Co-Chair**  
**Prof. Sunil Kumar Khare**  
Vice President,  
BRSI



**Conference Co-Chair**  
**Prof. Keshab C. Mondal**  
Dept. of Microbiology,  
Vidyasagar University



**Conference Co-Chair**  
**Prof. Byonghun Jeon**  
Director, HY-IEE  
Water & Environ-  
ment Center  
Hanyang  
University, Seoul,  
Republic of Korea



**Conference Co-Chair**  
**Prof. Jose Antonio Teixeira**  
Vice-President,  
International  
Bioprocessing  
Association  
University of Minho,  
Braga, Portugal



**Conference Co-Chair**  
**Prof. Debajyoti Das**  
Dean, School of  
Pharmaceutical  
Science  
Siksha 'O' Anu-  
sandhan (Deemed  
to be University)



**Conference Co-Chair**  
**Prof. Pradeep K. Das Mohapatra**  
Dept. of Microbiology  
Raiganj University, West Bengal



**Convener**  
**Dr. Amrita Banerjee**  
Asst. Professor  
(Research), CIBR  
Siksha 'O'  
Anusandhan  
(Deemed to be University)



**Convener**  
**Prof. Sasmita Mohanty**  
Professor, IBCS  
Siksha 'O'  
Anusandhan  
(Deemed to be University)



**Co-convener**  
**Dr. Binod Paramesaran**  
CSIR-National  
Institute for Inter-  
disciplinary  
Science and  
Technology,  
Trivandrum



**Co-convener**  
**Dr. Ananya Kuanar**  
Asst. Professor,  
CBT  
Siksha 'O'  
Anusandhan  
(Deemed to be University)



**Co-convener**  
**Dr. Sourav Chattaraj**  
Asst. Professor  
(Research), CIBR  
Siksha 'O'  
Anusandhan  
(Deemed to be University)



## EVENTS

■ Submission of abstracts opens	:	June 1, 2025
■ Abstracts submission closes	:	Oct. 15, 2025
■ Acceptance of abstracts	:	Oct. 17, 2025
■ Early bird registration	:	From July 1 to Oct 15, 2025
■ Normal registration	:	From Oct 15 to Oct. 31, 2025
■ Registration with late fee	:	From Nov 1 to Dec 7, 2025
■ Registration on the spot	:	From Dec 8 to 10, 2025

## PAYMENT MODE

- Beneficiary Name: SIKSHA 'O' ANUSANDHAN
- Bank Name: Canara Bank
- Branch: Shyampur, Bhubaneswar
- Bank Account No.: 3674201000018
- IFSC Code: CNRB0018069

## REGISTRATION LINK:



How to complete your registration in just a few easy steps:

<https://www.cibrconferencesoa.com/web/content/2413?unique=cee13125fb9777c894f3a2abde99d66271a11693&download=true>

## CONFERENCE REGISTRATION FEES

BRSI Members	Early Bird Registration	Normal Rate	Late Registration	On spot Registration
■ Full Delegates	Rs. 3500	Rs.4000	Rs.4500	Rs 5000
■ Accompanying person	Rs. 2500	Rs. 2500	Rs. 2500	Rs 2500
■ Research Scholars/ Students	Rs. 2500	Rs. 3000	Rs. 3500	Rs 4000
■ Non-BRSI Members				
■ Full Delegates	Rs. 4500	Rs. 5000	Rs. 5500	Rs 6000
■ Accompanying person	Rs. 2500	Rs. 2500	Rs. 2500	Rs 2500
■ Research Scholars / Students	Rs. 3000	Rs. 3500	Rs. 4000	Rs 4500
■ Industry /Corporate	Rs. 7000	Rs. 8,000	Rs. 8,500	Rs 9000
■ International Delegates				
■ Full delegates	US\$ 150	US\$ 175	US\$ 200	US\$ 225
■ Accompanying person	US\$ 75	US\$ 75	US\$ 75	US\$ 75
■ Research Scholars	US\$ 75	US\$ 100	US\$ 125	US\$ 125

Research Scholars and Students from SOA will be given 50% discounts. However, they will not be provided Dinner and Kit as applicable for other delegates. Add 18% additional as Good & Service tax (GST) on the fee shown

## ADVERTISEMENT IN THE SOUVENIR/ABSTRACT BOOK (PRINT AND E-COPIES):

■ Back cover (Full page)	Rs 40,000.00
■ Front cover (Inner full page)	Rs 30,000.00
■ Back cover (Inner full page)	Rs 25,000.00
■ Full page	Rs 20,000.00
■ Half page	Rs 10,000.00

E-copies will be in colour and print copies will be in b/w.

## SPONSORSHIP DETAILS (FOR EXHIBITION)

Sponsorship type	Amount in Rupees
■ Diamond sponsor	Rs. 5 Lakhs
■ Platinum Sponsor	Rs. 3 Lakhs
■ Gold Sponsor	Rs. 2 Lakhs
■ Silver Sponsor	Rs. 1 Lakhs
■ Bronze Sponsor	Rs. 50 Thousands



# CONTACT FOR QUERIES

## ■ Dr. Amrita Banerjee (Convener)

Centre for Industrial Biotechnology Research, SOA

Contact: +91 7872168400

## ■ Prof. Sasmita Mohanty (Convener)

Institute of Business and Computer Studies, SOA

Contact: +91 9810267210

## ■ Prof. H. N. Thatoi (Conference Chair)

Centre for Industrial Biotechnology Research, SOA

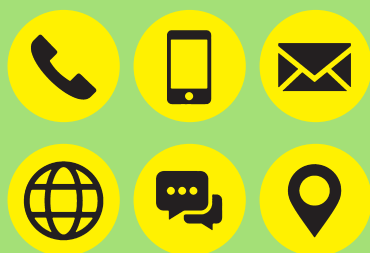
Contact: +91 8917440363

## ■ Prof. Ashok Pandey (General Chair)

Executive Director, Centre for Energy and Environmental Sustainability, Lucknow, India

Contact: +91 9447072265

Email: [bsdce2025@soa.ac.in](mailto:bsdce2025@soa.ac.in)



# HOW TO REACH

**By Air:** The nearest airport is the Biju Patnaik International Airport, Bhubaneswar (BBI) which is situated roughly 5 km away from SOA DU Campus-2, and is connected to all major cities of the country including Delhi, Chennai, Mumbai, Kolkata, Bengaluru, Varanasi, Allahabad, Patna, Ranchi, Vishakhapatnam and Nagpur. It is also served by international flight from UAE, Thailand and Malaysia.

**By Train:** A large number of Superfast trains and other trains originating from the major cities of India, are connected to Bhubaneswar station. SOA DU Campus 2 is 8 km from station.

**By Road:** There are a number of bus services connecting the city to various cities in the neighboring states. The bus services include Government as well as private buses. You can explore within the city using auto rickshaws and other

public modes of transports like buses, tourist buses and hired cars. SOA DU Campus 2 is 3 km from bus stand.

**Accommodation:** This is for the information to all conference delegates and invitees that the conference organizers have not authorized any third party to arrange accommodation. All the correspondence regarding the conference will be only through the official conference email address.

**Hotel:** Name(s) of the hotel will be uploaded shortly to be booked by the participants by themselves.

Accommodation for the invited speakers will be booked by the organizer

**VISA:** Overseas participants would require an entry visa. Please contact the Indian Embassy or Consulate in your country. We would be pleased to extend a formal invitation to the participants for this purpose, if required.

# PLACE TO VISIT

